



INVENTORY CATALOG

Quality equipment, seamless events



jd[®]
PRO SOUND
& LIGHTING

J Davis Prosound & Lighting
www.jdavisprosound.com

LIGHTING EQUIPMENT AND ACCESSORIES

jd
PRO SOUND
& LIGHTING

J Davis Prosound & Lighting
www.jdavisprosound.com

02



■ Moving luminaries



PEARL WASH

45514lux @3M

15.3KG



MINI LUNAR

375000Lux/10m

15.4KG



AURORA BSW

422000lux@10m

29.0KG

■ Stage spotlights



PROFILE SPOT
19° and 26°
9.4 KG



**CONVENTIONAL
FRESNEL**
1KV
5.3 KG

■ Stage spotlights



2 WAY BLINDER
LED WARM WHITE
3.6 KG



4 WAY BLINDER
LED WARM WHITE
5.6 KG

Stage Spotlights



RGBW LED PAR

15x4W LED
4.8 KG

COB LED PAR

15x4W RGB-W LED
4.8 KG



COB LED PAR

15x4W RGB-W LED
4.8 KG



Effects Lighting

CITY COLOR 2.5KV

60000 LUMENS
32 KG

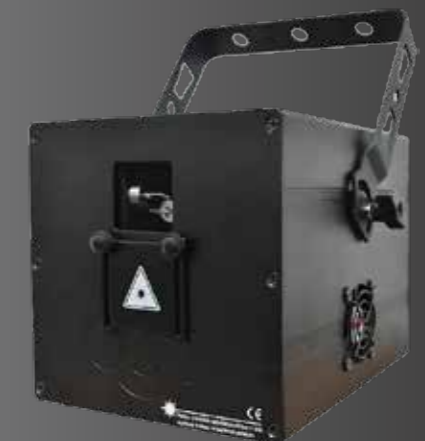


ACME 1500KV

2200 lux@5M
2.5 KG

3W DMX LASER

RGB
8 KG



■ Effects lighting

PHOTON M STRIKE

1000W LED
10.5 KG

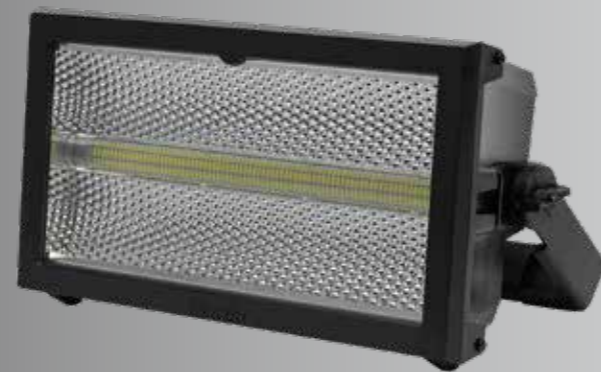


LED ZOOM PIXEL BAR

10 EYE 5° TO 26° ZOOM
23 KG

ATOMIC STROBE 3K

1591 lux@5M
12.1 KG



■ Effects lighting

SUNSTRIP ACTIVE MK II

10 LAMPS x 50W
6.2 KG



RGBW WASH BATTEN

18 LAMPS x 50W
6.2 KG



ALKALITE TRACPOD

60000 LUMENS
3.2 KG



■ Lighting Consoles



GrandMA 3 Full Size



GrandMA 2



GrandMA 2 Fader Wing



■ Lighting Consoles



AVOLITES Tiger Touch II



AVOLITES Pearl 2010



AVOLITES Mini Pearl 1024

■ Splitter Systems



ELATION eNode8 Pro
8-universe Ethernet-DMX node



OBSIDIAN EN12
CONTROL SYSTEMS
Ethernet to DMX/RDN gateway



ELATION OPTO BRANCH 8
8-way DMX distributor/booster

■ Splitter Systems



LIGHT SKY RDM 210
2x4 way RDM/DMX Splitter



LSC MDR
CONTROL SYSTEMS
2x4 way RDM/DMX Splitter



THEATRELIGHT NZ MDR
2x4 way RDM/DMX Splitter

Splitter Systems



W-DMX G4
Dual Band W-DMX™
Transceiver



W-DMX G5
W-DMX™ transmitter and
receiver tester



LIGHT SKY RDM 860
Truss mount RDM/DMX Splitter

Splitter Systems



LIGHT SKY RDM 210
2x4 way RDM/DMX Splitter



LSC MDR
CONTROL SYSTEMS
2x4 way RDM/DMX Splitter



THEATRELIGHT NZ MDR
2x4 way RDM/DMX Splitter